

# QualiSense Gold





w w w . a r s a c o . d e



Made in Germany

# QualiSense Sense of Quality Gold

**QualiSense Gold** as a trademark represents a collection of high quality products made by authentic German manufacturers, selected by ARSACO according to standards and demands.

**ARSACO** GmbH is a German company working as an international supplier and distributor of dental materials.

The management in ARSACO consists of a group of market experts and experienced dentists who carefully select the best products from the best manufacturers.



Manufacturer:  
DS Dental Supply GmbH  
Stiller Weg 15 A 22607 Hamburg Germany



# Contents



## Moldable Composite Filling Materials 2

- QualiSense MICROFILL
- QualiSense MH
- QualiSense NANO CER
- QualiSense NANOHYBRID

## Flowable Composite Filling Materials 6

- QualiSense MICROFILL F
- QualiSense NANOHYBRID F
- QualiSense SE COMP F
- QualiSense MICROHYBRID F

## Dual Cure Core Build-Up Composites 10

- QualiSense DC CORE
- QualiSense NANOCORE ZR

## Universal Adhesive 12

- QualiSense UNIVERSAL ADH
- QualiSense UNI CATALYST

## Light Cure Self-Etch Adhesives 14

- QualiSense ADHESIVE S1
- QualiSense ADHESIVE S2

## Light Cure Total-Etch Adhesives 16

- QualiSense ADHESIVE T1
- QualiSense ISOADHESIVE T1

## Dual Cure Adhesives 18

- QualiSense ADHESIVE T2
- QualiSense DC ADHESIVE S2

## Etching GEL 20

- QualiSense ETCHING GEL

## Calcium hydroxide Liners 21

- QualiSense CH LINER
- QualiSense LC LINER

## Glass Ionomer Liners 23

- QualiSense GI LINER

## Glass Ionomer Filling Cements 24

- QualiSense GI E
- QualiSense GI R
- QualiSense GI CONDITIONER

## Resin Modified Glass Ionomer 27

- QualiSense MODGLASS F
- QualiSense MODGLASS P



## Composite Luting Cements 30

- QualiSense UNI LUTE
- QualiSense DC CEM

## Resin Modified Glass Ionomer Cement 32

- QualiSense MODGLASS C

## Glass Ionomer Luting Cements 33

- QualiSense GI E CEM
- QualiSense GI R CEM

## Conventional Cements 35

- QualiSense ZN CARBOXYLATE C
- QualiSense ZN PHOSPHATE C



## Endodontic Materials

### MTA Universal

38

QualiSense MTA U



## Bleaching Materials

### Bleaching Gels

40

QualiSense BLEACHING 9%, 16%, 27%



## Dental Care Materials

### Pit & Fissure Sealants

42

QualiSense SEALANT

### Silicone Sealants

43

QualiSense SEAL VARNISH

### Desensitizers

44

QualiSense LC DESENSITIZER

QualiSense DESENSITIZER

### F-prophylaxis Materials

46

QualiSense FLUORIDE GEL

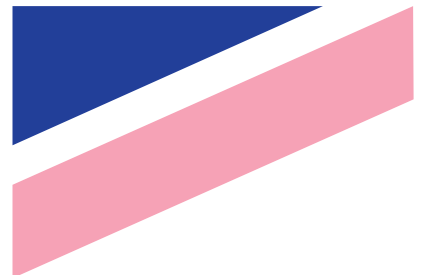
### Air Polishing

47

QualiSense POLISH

### Accessories & index

48



## Composite | Moldable Composite Filling Materials



## QualiSense MICROFILL ▲

Light cure high performance composite with excellent high gloss polishability for all cavity classes; Direct veneers and Repairing ceramic restorations (e.g. veneers, crowns).

### Characteristics

**MICROFILL** has excellent mechanical strength that makes the treatment durable.

**MICROFILL** has permanent high gloss and superior smooth surface that gives you a natural appearance.

**MICROFILL** is non-sticky and very easy to handle because of its moldable consistency.

### Advantages

- Suitable composite for Universal- or Multi-Opacity restorations
- Excellent radiopacity (~ 200 % Al) and Easy x-ray detection
- Low shrinkage
- Suitable for anterior and posterior application

### Composition

Dimethacrylate based resins and inorganic fillers < 0.2 µm.

The total filler content is 80 % by weight and 76 % by volume.

### Shades

**MICROFILL** is available in a wide variety of VITA®-Shades and in different opacities.

For easy and time saving esthetic restorations the Universal Shades are available.

For highest esthetic demands the shade layering technique is recommended. Thus wide variety of shades and opacities are available (Dentine, Enamel, Incisal).



User  
Instruction

### Package Details

- Syringe with 3 g

Catalogue NO. R111-10

# Composite

Moldable Composite  
Filling Materials



## QualiSense MH ▲

Light Cure Microhybrid composite suitable for all cavities.

### Characteristics

The high gloss polishability of **MH** gives you a superior smooth surface and excellent esthetic restorations that creates a natural appearance.

**MH** is non-sticky. Its moldable consistency makes it very easy to handle and apply.

### Advantages

- Long durability
- Suitable for anterior and posterior application
- Low shrinkage
- Radiopaque composite

### Composition

It is based on BIS-GMA-Resin and inorganic filler particles of 1.5-0.05 µm. The total filler load is 81 %, the total filler volume is 65 %.

### Shades

**MH** is shaded according to VITA®-Shades.



User  
Instruction

### Package Details

- Syringe with 4.5 g

Catalogue NO. R112-10

## Composite

Moldable Composite  
Filling Materials



## QualiSense NANO CER ▲

Light Cure Microhybrid composite with Nano-Fillers, suitable for all cavities.

### Characteristics

**NANO CER** exhibits long durability.

With its higher filler load **NANO CER** gives you higher hardness.

The high gloss polishability of **NANO CER** enables you to do excellent esthetic restorations and helps you to create a natural appearance because of its superior smooth surface.

**NANO CER** is non-sticky and very easy to handle.

### Advantages

- Low shrinkage
- Suitable for anterior and posterior application

### Composition

It is based on BIS-GMA-resin and inorganic filler particles of 0.9-0.05 µm.

Filler content: 81 % (wt), 70 % (vol).

### Shades

**NANO CER** is shaded according to VITA®-Shades. It is also available in special shades and bleach shades.



User  
Instruction

### Package Details

- Syringe with 4 g

Catalogue NO. R113-10



# Composite

Moldable Composite  
Filling Materials



## QualiSense NANOHYBRID ▲

Esthetic low shrink light cure composite with nano-filler technology, suitable for all cavities.

### Characteristics

The excellent mechanical properties off **NANOHYBRID** create long durability of the treatment.

You can create natural appearance because **NANOHYBRID** is Easy to polish and it has superior smooth surface for excellent esthetic restorations.

**NANOHYBRID** is Non-sticky and very easy to handle.

### Advantages

- Suitable for anterior and posterior application
- Excellent radiopacity (~ 200 % Al) and Easy x-ray detection
- Low shrinkage

### Composition

It is based on urethanedimethacrylate resin and inorganic filler particles <1.0 µm. The total filler content is 82 % (wt) and %74 (vol).

### Shades

**NANOHYBRID** is shaded according to VITA®-Shades. It is also available in special shades and bleach shades.



User  
Instruction

### Package Details

- Syringe with 4 g

Catalogue NO. R114-10

## Composite | Flowable Composite Filling Materials



### QualiSense MICROFILL F ▲

Light cure high performance flowable composite with excellent high gloss polishability for restorations of class III, IV, V and small cavities class I and II. And also for Lining of cavities.

#### Characteristics

The superior smooth surface of **MICROFILL F** is a result of its high gloss polishability. It enables you to build excellent esthetic restorations and create natural appearance and opalescence.

**MICROFILL F** has permanent high gloss with long durability.

#### Advantages

- Low shrinkage
- Excellent radiopacity (~140 % Al) and easy x-ray detection
- Suitable for anterior and limited posterior restorations

#### Composition

Dimethacrylate based resins and inorganic fillers < 0.2 µm.

The total filler content is 57 % by weight and 48 % by volume.

#### Shades

**MICROFILL F** is shaded according to VITA®-Shades.



User  
Instruction

#### Package Details

- Syringe with 2ml

Catalogue NO. R121-11

# Composite

Flowable Composite  
Filling Materials



## QualiSense NANOHYBRID F ▲

Flowable light cure composite with nano-filler technology for restorations of class III, IV, V and small cavities class I and II and also for Lining of cavities.

### Characteristics

The treatment with **NANOHYBRID F** lasts long time due to its excellent mechanical properties.

Because of its superior smooth surface, it is easy to polish and create excellent esthetic restorations with natural appearance.

**NANOHYBRID F** is very easy to handle.

### Advantages

- Low shrinkage
- Low abrasion
- Excellent radiopacity (~ 150 % Al) and Easy x-ray detection
- Suitable for anterior and limited posterior restorations

### Composition

It is based on urethanedimethacrylate resin and inorganic filler particles <1,0 µm.

The total filler content is 62 % by weight and 48 % by volume.

### Shades

**NANOHYBRID F** is shaded according to VITA®-Shades.



User  
Instruction

### Package Details

- Syringe with 1ml

Catalogue NO. R122-10

## Composite | Flowable Composite Filling Materials



### QualiSense SE COMP F ▲

Self-adhesive light cure flowable composite for:

- Small class I restorations
- Lining of class I and II cavities
- Pit and fissure sealing
- Extended fissure sealing
- Filling of undercuts

#### Characteristics

**SE COMP F** is easy to apply.

The mechanical properties of **SE COMP F** make long durability.

You can create a natural appearance and natural opalescence with **SE COMP F** due to its superior smooth surface.

#### Advantages

- Requires no etching
- Require no priming and bonding of enamel and dentin
- Low shrinkage
- Excellent radiopacity (~150 % Al) and Easy x-ray detection
- Suitable for anterior and limited posterior restorations

#### Composition

It is based on methacrylates and inorganic fillers and inorganic filler particles of 1-0.05 µm. The total filler load is %59 and the total filler volume %45.

#### Shades

**SE COMP F** is shaded according to VITA®-Shades.



User  
Instruction

#### Package Details

- Syringe with 2ml

Catalogue NO. R123-11

# Composite

Flowable Composite  
Filling Materials



## QualiSense MICROHYBRID F ▲

Light Cure Easy Flowable Microhybrid Composite for restorations of class III, IV and V, small class I and II restorations, Lining of cavities and sealings.

### Characteristics

The high gloss polishability of **MICROHYBRID F** gives you a restoration with natural appearance. It is easy flowing microhybrid and a radiopaque composite. **MICROHYBRID F** is universal and can be used for anterior and limited posterior restorations and for sealing.

### Advantages

- easy application consistency
- good radiopacity (150 % aluminium)
- good physical properties and abrasion resistance
- high gloss polishability and excellent color stability

### Composition

It is based on methacrylate-resin and inorganic filler particles of 1-0.05  $\mu\text{m}$ .  
The total filler load is %62 and the total filler volume %47.

### Shades

**MICROHYBRID F** is shaded according to VITA®-Shades.



User  
Instruction

### Package Details

- Syringe with 2ml

Catalogue NO. R124-10

## Composite | Dual Cure Core Build-Up Composites



### QualiSense DC CORE ▲

Dual Curing Flowable Microhybrid Composite for Core Build-ups and Cementation of Posts, crowns and bridges, inlays and onlays.

#### Characteristics

Excellent thixotropic behavior.

**DC CORE** delivered in auto-mixing 1:1 MINIMIX-syringes it can be easily dispensed and applied directly.

#### Advantages

- Radiopaque flowable microhybrid composite
- Short setting time without high heat generation

#### Composition

**DC CORE** is based on poly- and difunctional methacrylates and inorganic filler particles of 2.5-0.05 µm. The total filler content is 66 % by weight and 46 % by volume.



User  
Instruction

#### Package Details

- MINIMIX-syringe with 5 ml
- AUTOMIX-cartridge with 25 ml

5ml R131-10  
Catalogue NO. 25ml R131-11

# Composite | Dual Cure Core Build-Up Composites



## QualiSense NANOCORE ZR ▲

Dual Curing Flowable Microhybrid Composite for Core Build-ups and Cementation of Posts, crowns and bridges, inlays and onlays.

### Characteristics

**NANOCORE ZR** is a Dual Curing composite with nano particles (nano-zirconium dioxide, nano-calciumfluoride) Due to its excellent mechanical properties final crown preparation can be carried out more precise.

**NANOCORE ZR** delivered in auto-mixing 1:1 MINIMIX-syringes it can be easily dispensed and applied directly.

### Advantages

- High radiopaque flowable microhybrid composite
- Short setting time without high heat generation

### Composition

**NANOCORE ZR** is based on poly- and difunctional methacrylates and inorganic filler particles of 10-0.02 µm. The total filler content is 64 % by weight and 48 % by volume.



User  
Instruction

### Package Details

- MINIMIX-syringe with 5 ml
- AUTOMIX-cartridge with 25 ml

5ml R132-10  
Catalogue NO. 25ml R132-11

## Bonding | Universal Adhesive



## QualiSense UNIVERSAL ADH ▲

Universal light cure one-component adhesive for light cure and self-cure restorative materials. Suitable for all techniques on wet and dry dentin or enamel surfaces.

### Indications

Adhesive for the self-etch technique, selective enamel etching or total-etch technique for:

- Direct light cure composite and compomer restorations.
- Core build-ups with light, dual and self cure composites (e.g. DC CORE, NANOCORE ZR).
- Cementing of inlays, onlays, crowns and bridges with light, dual and self cure composite cements (e.g. DC CEM).
- Repair of fractured composite restorations.

### Characteristics

**UNIVERSAL ADH** is based on innovative MDP technology .

**UNIVERSAL ADH** allows an excellent adhesion.

Use **UNIVERSAL ADH** in combination with **UNI CATALYST** where light cure cannot be ensured (e.g. in the root canal).



User  
Instruction

### Package Details

- Bottle with 5ml

Catalogue NO. R215-10



## Bonding | Universal Adhesive



### QualiSense **UNI CATALYST** ▲

Self-cure catalyst only in combination for mixing with Universal ADH for self and dual cure composites for areas, where light cure is not possible.

#### Indications

**UNI CATALYST** is designed as a product for additional and/or extended self-etch applications of UNIVERSAL ADH for all the special cases, where light cure of the adhesive cannot be ensured (e.g. in the root canal). Activator of the UNIVERSAL ADH for cementing of posts (and possibly subsequent core buildup) with dual or self-cure composites (e.g. DC CORE, NANOCORE ZR).

#### Characteristics

- Typical composition of **UNI CATALYST** is Catalysts and stabilizers in ethanol.
- The mixture of **UNIVERSAL ADH/ UNI CATALYST** is suitable for moist, wet and dry surfaces.



User  
Instruction

#### Package Details

- Bottle with 5ml

Catalogue NO. R216-10



## Bonding | Light Cure Self-Etch Adhesives



### QualiSense **ADHESIVE S1** ▲

One bottle self-etching light cure adhesive for light cure restorative materials.

#### Characteristics

**ADHESIVE S1** is solvent free and needs wet tooth conditioning.

Easy application because of one step for etching, priming, and bonding.

It is designed for strong bonding of composites to enamel and dentin.

**ADHESIVE S1** has an effective marginal sealing without microleakage.



User  
Instruction

#### Package Details

- Bottle with 5ml

Catalogue NO. R221-10

## Bonding | Light Cure Self-Etch Adhesives



### QualiSense **ADHESIVE S2** ▲

Two bottles self-etching light cure adhesive for light cure restorative materials.

#### Characteristics

**ADHESIVE S2** is Reliable under both wet and dry dental surfaces.

It consists of a self-etching primer Part A and a bonding agent Part B, that are applied one after the other.

**ADHESIVE S2** designed for bonding of light cure composites to enamel and dentine, silicate ceramics, zirconia and non-precious metals.

**ADHESIVE S2** is compatible with all visible light cure composite restorative materials.



User  
Instruction

#### Package Details

- Bottle with 5ml Part A (Primer)
- Bottle with 5ml Part B (Bonding)

Catalogue NO. R222-10

## Bonding | Light Cure Total-Etch Adhesives



### QualiSense **ADHESIVE T1** ▲

Light cure one bottle strong bonding agent for the total-etch technique.

#### Indications

It is designed for strong bonding of light cure composites and compomers to etched enamel and dentine and to nonprecious and precious metals.

#### Characteristics

- Ethanol-based and hydrophilic
- Can be used on slightly moist dentine surfaces (wet bonding technique)



User  
Instruction

#### Package Details

- Bottle with 5 ml

Catalogue NO. R233-10

## Bonding | Light Cure Total-Etch Adhesives



## QualiSense ISOADHESIVE T1 ▲

One bottle adhesive with less solvent for light cure composite restorative materials.

### Indications

**ISOADHESIVE T1** is an adhesive for restorations with light cure composites and compomers.

### Characteristics

- Ethanol-based and hydrophilic
- Can be easily used on slightly moist dentine surfaces (wet bonding technique)
- Strong bonding agent for the total-etch technique



User  
Instruction

### Package Details

- Bottle with 5 ml

Catalogue NO. R234-10

## Bonding | Dual Cure Adhesives



### QualiSense **ADHESIVE T2** ▲

Dual Cure two bottles Bonding System for the Total-Etch Technique.

#### Indications

**ADHESIVE T2** is designed for strong bonding of light cure, self cure and dual cure composites to etched enamel and dentine and to non-precious and precious metals.

It can be also used for priming the root canals before cementation of endodontic posts with self- or dual cure composites.

#### Characteristics

**ADHESIVE T2** can be used on slightly moist dentin surfaces (wet bonding technique).

**ADHESIVE T2** is a simple to use dual cure bonding system consisting of the two bottles. Part A and Part B should be mixed before application as a Dual Cure bonding.



User  
Instruction

#### Package Details

- Bottle with 5 ml Part A
- Bottle with 5 ml Part B

Catalogue NO. R241-10

## Bonding | Dual Cure Adhesives



### QualiSense DC ADHESIVE S2 ▲

DC ADHESIVE S2 is a simple to use two bottles self-etching dual cure adhesive for a durable and strong bonding .

#### Indications

##### Adhesive for:

- Core build-ups and cementing of posts with dual and self cure composites (e.g. DC CORE, NANOCORE ZR)
- Cementing of posts with dual and self-cure composite cements (e.g. DC CEM)
- Cementing of inlays, onlays, crowns and bridges with dual and self-cure composite cements (e.g. DC CEM)
- Composite based restorations with dual cure, self-cure and light cure composites
- Resin modified Glass Ionomer cements

#### Characteristics

**DC ADHESIVE S2** works optimally under slightly wet conditions.

It consists of two components , Part A and Part B that were mixed before application.



User  
Instruction

#### Package Details

- Bottle with 5 ml Part A
- Bottle with 5 ml Part B

Catalogue NO. R242-10

## Etching | Etching GEL



## QualiSense ECHING GEL ▲

ETCHING GEL is a 37% phosphoric acid gel for enamel and dentine with an excellent thixotropy.

### Indications

Enamel etch or total etch technique for:

- Composite restorations
- Sealing of fissures
- Adhesive cementation of inlays, onlays, crowns and bridges (with suitable composite-cement systems)

### Characteristics

**ETCHING GEL** can be applied very easily and safely on areas that are really desired to be etched.



User  
Instruction

### Package Details

- Syringe with 2ml

Catalogue NO. R281-10



## Liner | Calcium hydroxide liners



### QualiSense CH LINER ▲ Radiopaque water-based calcium hydroxide liner.

#### Indications

**CH LINER** has excellent features and can be used for:

- Direct capping when the pulp is opened or a pulpotomy is performed.
- Indirect capping for the treatment of caries profunda.
- Temporary filling of root canals.
- Lining of cavities to prevent exposure to acid media when using cements.

#### Advantages

- Radiopaque liner
- High pH



User  
Instruction

#### Package Details

- Syringe with 2ml

Catalogue NO. R141-10

## Liner | Calcium hydroxide liners



## QualiSense LC LINER ▲

Light cure radiopaque liner with calcium hydroxide.

### Indications

**LC LINER** can be used for:

- Indirect pulp capping
- Lining of cavities for filling procedures

### Advantages

- High pH
- Light cure liner



User  
Instruction

### Package Details

- Syringe with 2ml

Catalogue NO. R142-10

## Liner | Glass Ionomer Liners



## QualiSense **GI LINER** ▲

Light cure radiopaque Resin Based Glass Ionomer Liner.

### Indications

**GI LINER** is a good choice for:

- Lining of cavities for filling procedures
- Lining of cavities to improve marginal behaviour



User  
Instruction

### Package Details

- Syringe with 2ml

Catalogue NO. R152-10

## Glass Ionomer | Glass Ionomer Filling Cements



### QualiSense **GIE** ▲

GIE is a non-sticky condensable esthetic restorative Glass Ionomer cement.

#### Characteristics

**GIE** has good chemical bonding to dentine and enamel. Therefore, it requires no enamel and dentin etching. It has early resistance to water uptake which permits one visit treatment.

#### Advantages

- High fluoride content
- Excellent biocompatibility
- Because of its radiopacity it ensures easy postoperative diagnosis

#### Shades

**GIE** is available in important VITA®-Shades.



User  
Instruction

#### Package Details

HandMix Kit:

- Bottle with 15 g powder
- Bottle with 8 ml liquid

Catalogue NO. R161-10

## Glass Ionomer | Glass Ionomer Filling Cements



### QualiSense GI R ▲

GI R is a developed Glass Ionomer restorative cement that shows, even in warm and humid climate, an excellent shelf life.

#### Advantages

- Resistant to humid and warm climate
- Very good biocompatibility
- High fluoride content

#### Shades

GI R is available in important VITA®-Shades.



#### Package Details

HandMix Kit:

- Bottle with 15 g powder
- Bottle with 8 ml liquid

Catalogue NO. R162-10

## Glass Ionomer | Glass Ionomer Filling Cements



### QualiSense **GI CONDITIONER** ▲

GI CONDITIONER is a mild polyacrylic acid solution designed to clean the cavity and to condition dentine and enamel, thus enhancing the bond between Glass Ionomer cement and tooth structure.



User  
Instruction

#### Package Details

- Bottle with 3 ml

Catalogue NO. R163-10

## Glass Ionomer | Resin Modified Glass Ionomer



### QualiSense MODGLASS F ▲

Improved fluoride-containing resin modified glass-ionomer cement for the adhesive restoration of teeth.

#### Indications

**MODGLASS F** is an excellent choice for:

- Primary teeth: restorations of Class I, II and V
- Long-term restoration in non-load bearing areas of Class I and II
- Restoration of Class V
  - Intermediate restorations
- Sandwich material for heavy stress bearing Class I and II cavities
- Core build-ups

#### Advantages

- Excellent fluoride release
- Excellent biocompatibility
- Good chemical bonding to dentine and enamel and a tight seal at the dentinal margins
- Very easy to polish with esthetic final results
- Fast setting and easy handling
- Higher mechanical strength than classical Glass Ionomer Cements
- Low shrinkage
- Available with nano-fluorapatite
- Very color stable
- Because of its radiopacity it ensures easy postoperative diagnosis

#### Shades

**MODGLASS F** is available in important VITA®-Shades.



User  
Instruction

#### Package Details

HandMix Kit:

- Bottle with 15 g powder
- Bottle with 8 ml liquid

Catalogue NO. R171-10



## Glass Ionomer | Resin Modified Glass Ionomer



### QualiSense MODGLASS P ▲

Self-etching Light cure MODGLASS P is a simple to use primer for dentine and enamel to enhance the bond between light cure resin modified Glass Ionomer cements and tooth structure.



User  
Instruction

#### Package Details

- Bottle with 3 ml

Catalogue NO. R172-10





Luting  
Cements





Luting  
Cements

## Luting Cement

Composite Luting  
Cements



## QualiSense UNI LUTE ▲

Dual cure Self Etching Self Adhesive Luting cement for permanent cementations of:

- Crowns and bridges made of metal and metal ceramic
- Crowns and bridges of reinforced ceramics (e.g. Zirconia)
- All-ceramic crowns and bridges produced by using Cerec®
- Inlays and onlays of ceramic, metal and composite
- Posts
- Metal, metal ceramic and reinforced ceramics (e.g. Zirconia) on implant abutments

### Characteristics

**UNI LUTE** delivered in auto-mixing 4:1 syringes it can be easily dispensed and applied directly. When using **UNI LUTE**, Conditioning and bonding of the tooth structure are not necessary.

### Advantages

- Self-neutralizing
- Suitable working time

### Composition

**UNI LUTE** is based on methacrylate resin and inorganic fillers. The total filler load is %50 wt, the total filler volume is 45 %.



User  
Instruction

### Package Details

- MINIMIX-syringe with 5 ml
- AUTOMIX-cartridge with 25 ml

5ml L515-10  
Catalogue NO. 25ml L515-11

# Luting Cement

Composite Luting  
Cements



## QualiSense DC CEM ▲

DC CEM is a dual cure easy flowing microhybrid composite for permanent cementations of inlays, onlays, crowns, bridges and veneers.

### Characteristics

**DC CEM** delivered in auto-mixing MINIMIX-syringes it can be easily dispensed and applied directly.

### Advantages

- Radiopaque
- High filled composite cement
- Very high strength
- Suitable working time

### Composition

**DC CEM** is based on methacrylate resin and inorganic filler particles of 1-0.05  $\mu\text{m}$ . The total filler load is 61 % and the total filler volume 41 %.



User  
Instruction

### Package Details

- MINIMIX-syringe with 5 ml
- AUTOMIX-cartridge with 25 ml

5ml L516-10  
Catalogue NO. 25ml L516-11



## Luting Cement

Resin Modified Glass Ionomer Cement



## QualiSense MODGLASS C ▲

MODGLASS C is a light cure Resin Modified Glass Ionomer Luting Cement.

### Indications

**MODGLASS C** is used for:

- Cementing of crowns, bridges, inlays and onlays (all types: metal, resin, ceramic fused to metal and ceramic)
- As a Liner under composite fillings

### Characteristics

Beside its excellent fluoride release and the excellent biocompatibility as Glass Ionomer cement **MODGLASS C** has also a good chemical bonding to dentine and enamel and to the restoration and a tight seal at the dentinal margins.

### Advantages

- Higher mechanical strength than classical Glass Ionomer Cements
- Easy handling
- Low shrinkage
- Low film thickness
- Suitable setting time
- Because of its radiopacity it ensures easy postoperative diagnosis

### Shades

**MODGLASS C** is available in important VITA®-Shades.



User  
Instruction

### Package Details

HandMix Kit:

- Bottle with 15 g powder
- Bottle with 10 ml liquid

Catalogue NO. L571-10

# Luting Cement

Glass Ionomer Luting  
Cements



## QualiSense GI E CEM ▲

GI E CEM is a fluoride containing radiopaque classical strontium Glass Ionomer cement designed for cementing a wide variety of prosthetic appliances and materials. It bonds to enamel, dentine, non-precious metals and porcelain.

### Indications

**GI E CEM** is suitable for cementing all types of crowns, inlays, onlays, bridges, endodontic posts and orthodontic bands.

It can also be used for amalgam bonding and as liner.

### Advantages

- Good chemical adhesion
- Radiopaque cement
- Excellent Biocompatibility
- High fluoride containing

### Shades

**GI E CEM** is available in important VITA®-Shades.



User  
Instruction

### Package Details

HandMix Kit:

- Bottles with 15 g powder & 10 ml liquid
- Bottles with 35 g powder & 25 ml liquid

L561-10

Catalogue NO. L561-11



Luting  
Cements

## Luting Cement

Glass Ionomer Luting  
Cements



## QualiSense GI R CEM ▲

Special Glass Ionomer luting cement, not sensitive to moisture during storage, resulting in an excellent shelf life.

### Indication

Permanent cementations of inlays, onlays, crowns and bridges

### Advantages

- Resistant to humid and warm weather
- High chemical adhesion
- Excellent Biocompatibility
- High fluoride containing

### Shades

**GI R CEM** is available in important VITA®-Shades.



User  
Instruction

### Package Details

HandMix Kit:

- Bottles with 15 g powder & 10 ml liquid
- Bottles with 35 g powder & 25 ml liquid

L562-10  
Catalogue NO. L562-11

# Luting Cement

Conventional Cements



## QualiSense ZN CARBOXYLATE C ▲

ZN CARBOXYLATE C is a zinc polycarboxylate cement based on zinc oxide and polyacrylic acid for permanent cementing of Inlays, Onlays, Crowns and Bridges.



User  
Instruction

### Package Details

HandMix :

- Bottle with 35 g powder
- Bottle with 15 ml liquid

Catalogue NO. L591-10



Luting  
Cements

## Luting Cement

Conventional Cements



## QualiSense ZN PHOSPHATE C ▲

ZN PHOSPHATE C is classical cement based on zinc oxide and phosphoric acid for permanent cementing of Inlays, Onlays, Crowns, Bridges, orthodontic bands and cavity linings.



User  
Instruction

### Package Details

HandMix :

- Bottle with 35 g powder
- Bottle with 15 ml liquid

Catalogue NO. L592-10





Endodontic  
Materials





## MTA CEMENT | MTA Universal



### QualiSense MTA U ▲

MTA U is an endodontic biocompatible repair cement. MTA U powder is consisting of very fine hydrophilic particles of several mineral oxides. After contact with MTA U liquid it forms a gel that hardens to an impermeable barrier.

#### Indications

**MTA U** is used for:

- Repair of root perforations during root canal therapy
- Root end filling (retrograde)
- Pulp capping
- Root end filling (orthograde)

#### Advantages

- Excellent biocompatibility
- Excellent margin sealing
- High chemical adhesion
- Suitable working time



User  
Instruction

#### Package Details

HandMix :

- Bottle with 1 g Powder
- Bottle with 3 ml Liquid

Catalogue NO. E611-10



**Bleaching**  
Materials





Bleaching  
Materials

## Bleaching | Bleaching Gels



## QualiSense **BLEACHING** 9%, 16%, 27% ▲

In Office Bleaching System for Professional Tooth Whitening in Dentistry.

### Indications

Whitening of individual or multiple discolored teeth (vital and non-vital) within a dental treatment. Teeth whitening takes place by oxidative breakdown of organic substances in the enamel.

### Composition

Qualisense **BLEACHING** is a self-activating hydrogen peroxide containing bleaching material in a 1:1 syringe and is available in three types of hydrogen peroxide concentrations: %9, %16 and %27



User  
Instruction

### Package Details

- Bleaching 9% - MINIMIX-syring with 4ml 9% **B881-10**
- Bleaching 16% - MINIMIX-syring with 8ml 16% **B881-11**
- Bleaching 27% - MINIMIX-syring with 8ml **Catalogue NO. 27% B881-12**



Dental Care  
Materials





Dental Care  
Materials

## Sealant | Pit & Fissure Sealants



### QualiSense **SEALANT** ▲

SEALANT is a light cure single component and fluoride containing methacrylate based pit and fissure sealant; semi-opaque and white.

#### Advantages

The white coloration allows controlled application and facilitates visual observation, the semi-opaque colouration is more tooth like.



User  
Instruction

#### Package Details

- Syringe with 2ml

Catalogue NO. D911-11

## Sealant | Silicone Sealants



### QualiSense SEAL VARNISH ▲

SEAL VARNISH is a silicone based one component acid protecting varnish with Nano-Fluorapatite and Nano-Calciumfluoride for sealing of teeth .

#### Indications

The application of **SEAL VARNISH** is easy and time saving and it is an excellent choice for:

- Sealing of teeth where cleaning is difficult due to multi-band technique
- Sealing of teeth when patients are handicapped
- Temporary sealing of restorations with marginal leakage

#### Characteristics

**SEAL VARNISH** does not require etching.

It builds a protective film that can be renewed or repaired just as you like, if necessary.

It contains 2000 ppm (0,2 %) fluoride.

Nano-technology fluorapatite particles are known to enhance remineralization of tooth material.



User  
Instruction

#### Package Details

- SingleDose package with 2×0.5 ml Bottles

Catalogue NO. D921-10



Dental Care  
Materials

## Sealant | Desensitizers



### QualiSense **LC DESENSITIZER** ▲

LC DESENSITIZER is a light curing dentine adhesive agent, which serves all at once as a desensitizer.

#### Indications

**LC DESENSITIZER** is designed for strong bonding of composites, compomers and metals to enamel and dentine. Use **LC DESENSITIZER** to anodynes all postoperative pains during and after dental treatments in cervical regions and free dentine areas.

#### Characteristics

**LC DESENSITIZER** has good wetting properties.

It is ethanol-based and hydrophilic. Therefore it can be used on slightly moist dentine surfaces (wet-bonding-technique).

Good, long lasting adhesive strength and good biocompatibility are attained by methacrylate grafted polycarboxylic acids.



User  
Instruction

#### Package Details

- Bottle with 5 ml

Catalogue NO. D931-10



## Sealant | Desensitizers



### QualiSense **DESENSITIZER** ▲

DESENSITIZER is a silicone based one component acid protecting varnish.

#### Indications

**DESENSITIZER** is the best choice if you want to:

- Protect hypersensitive cervicals
- Protect after scaling or professional tooth cleaning
- Application after bleaching procedures

#### Characteristics

Nano-technology fluorapatite particles are known to enhance remineralization of tooth material.

#### Composition

**DESENSITIZER** contains 2000 ppm (0,2 %) fluoride.

Nano-Fluorapatite, Nano-Calciumfluoride and soluble fluoride



User  
Instruction

#### Package Details

- Bottle with 5 ml

Catalogue NO. D932-10



Dental Care  
Materials

## Prophylaxis | F-prophylaxis Materials



### QualiSense **FLUORIDE GEL** ▲

A fluoride containing one component protective gel with pleasant Xylitol. For desensitizing of teeth it is applied on dentin and enamel surface.

#### Indications

- Protection and fluoridation of tooth surface
- Treatment of hypersensitive teeth
- Treatment of exposed dental necks
- Sealing of teeth during and/or after orthodontic procedures
- Sealing of tooth surface after bleaching
- **FLUORIDE GEL** is for adults and for children over 3 years old

#### Characteristics

**FLUORIDE GEL** adheres to wet and dry surfaces and can be applied easily and time saving. Fluorapatite particles are known to enhance remineralization of tooth material. It has a pleasant sweetish taste.

#### Composition

**FLUORIDE GEL** contains 22600 ppm (2,26 %) fluoride.

It Contains in addition to easy soluble fluorides Calciumfluoride and Fluorapatite.



User  
Instruction

#### Package Details

- Tube with 10 ml

Catalogue NO. D941-10

# Prophylaxis | Air Polishing



## QualiSense POLISH ▲

QualiSense POLISH is a powder for the cleaning and polishing of teeth as part of a dental professional prophylaxis treatment.

### Indications

- Removal of extrinsic stains, e.g. coffee, tea, and tobacco
- Plaque removal prior to fluoride treatments
- Prophylaxis of orthodontic patients
- Treatment of hypersensitivity
- Surface preparation prior to bonding and sealing
- Before and after scaling and root planning procedure to reduce sensitivity
- Before and after bleaching procedures
- Encourage remineralization of tooth material



User  
Instruction

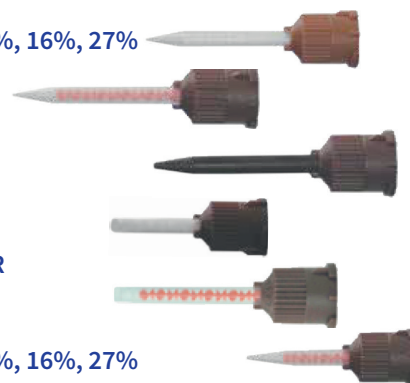
Catalogue NO. D951-10

# Accessories

## Mixing Cannulas and Intra Oral Tips for MINIMIX-Syringes

### Mixing Cannulas for MINIMIX-Syringes

	Catalogue NO.	Product
ML 2.5-12-S 1:1	A801-10	QualiSense BLEACHING 9%, 16%, 27%
MLX 2.5-12-S 4:1/10:1	A801-11	QualiSense UNI LUTE
ML 2.5-12-SB 1:1	A801-12	QualiSense DC CEM
ML 2.5-08-D	A801-13	QualiSense DC CORE QualiSense NANOCORE ZR
MLX 2.5-12-D 4:1/10:1	A801-14	QualiSense UNI LUTE
MLX 2.5-08-S 4:1/10:1	A801-15	QualiSense BLEACHING 9%, 16%, 27%



### Mixing Cannulas for AUTOMIX-Syringes

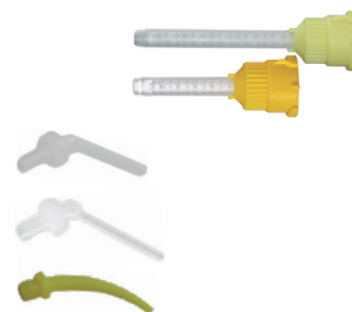
	Catalogue NO.	Product
MB 4.2-12-D / MBT 4.2-12-D	A802-10 / A802-11	QualiSense DC CORE QualiSense NANOCORE ZR

### Intra Oral Tips

Intra Oral Tip IOT212 transparent	A803-10	ML 2.5-08-D
Endo Tip IOR209 transparent	A803-11	ML 2.5-12-D
Intra oral tip, yellow	A803-12	MB 4.2-12-D

### Product

### Mixing Cannulas



## Needle Tips for Syringes (1-5 ml)

### Needle Tips

	Catalogue NO.	Product
Needle tips gauge 18, color: black	A804-10	QualiSense MICROFILL F QualiSense NANOHYBRID F
Needle tips gauge 20, color: black	A804-11	QualiSense LC LINER QualiSense CH LINER QualiSense SE COMP F QualiSense GI LINER
Needle tips gauge 22, color: black	A804-12	QualiSense SEALANT
Needle tips gauge 25, color: blue	A804-13	QualiSense ETCHING GEL

# Index

	Page		Page
<b>A</b>		<b>L</b>	
QualiSense ADHESIVE T1	16	QualiSense LC DESENSITIZER	44
QualiSense ADHESIVE S1	14	QualiSense LC LINER	21
QualiSense ADHESIVE S2	15	<b>M</b>	
QualiSense ADHESIVE T2	18	QualiSense MH	3
<b>B</b>		QualiSense MICROFILL	2
QualiSense BLEACHING 9%	40	QualiSense MICROFILL F	6
QualiSense BLEACHING 16%	40	QualiSense MICROHYBRID F	9
QualiSense BLEACHING 27%	40	QualiSense MODGLASS C	32
<b>C</b>		QualiSense MODGLASS F	27
QualiSense CH LINER	21	QualiSense MODGLASS P	28
<b>D</b>		QualiSense MTA U	38
QualiSense DC ADHESIVE S2	19	<b>N</b>	
QualiSense DC CEM	31	QualiSense NANO CER	4
QualiSense DC CORE	10	QualiSense NANOCORE ZR	11
QualiSense DESENSITIZER	45	QualiSense NANOHYBRID	5
<b>E</b>		QualiSense NANOHYBRID F	7
QualiSense ETCHING GEL	20	<b>P</b>	
<b>F</b>		QualiSense POLISH	47
QualiSense FLUORIDE GEL	46	<b>S</b>	
<b>G</b>		QualiSense SE COMP F	8
QualiSense GI CONDITIONER	26	QualiSense SEAL VARNISH	43
QualiSense GI E	24	QualiSense SEALANT	42
QualiSense GI E CEM	33	<b>U</b>	
QualiSense GI LINER	23	QualiSense UNI CATALYST	13
QualiSense GI R	25	QualiSense UNI LUTE	30
QualiSense GI R CEM	34	QualiSense UNIVERSAL ADH	12
<b>I</b>		<b>Z</b>	
QualiSense ISOADHESIVE T1	17	QualiSense ZN CARBOXYLATE C	35
		QualiSense ZN PHOSPHATE C	36

## DS Dental Supply GmbH

DS Dental Supply is a leading German manufacturer for dental consumable materials. Today DS Dental Supply is one of the worldwide leading manufacturers in Private Label and Private Label Brand Business.

Besides reliability and quality, the longstanding customers especially appreciate its strength to innovate in a dialogue with them new customized products for challenging applications.

DS Dental Supply provides innovative material solutions for dentists and dental technicians for almost all scopes:

composite restoratives- including bioactive ones, temporary materials, cements, endodontic materials- including MTA, materials for implantology, bite registration materials, materials for impressions, denture relining materials, bleaching materials and prophylaxis materials / desensitizers and much more.

All materials are produced according to highest quality standards and your individual requests.

DS Dental Supply is certified according to DIN ISO 13485 and 93/42/EEC and applies only finest raw materials in order to provide a reliable high quality to its customers.





Schützenstraße 11  
D-66953 Pirmasens  
Germany

[Info@arsaco.de](mailto:Info@arsaco.de)  
[www.arsaco.de](http://www.arsaco.de)

Tel: +49 6331 228 1010  
Fax: +49 6331 228 1012

